

The MUSICAL STATIONS of the CROSS



PEACHTREE ROAD UNITED METHODIST CHURCH

SUNDAY, MARCH 22, 2026, 7 PM

ARTIST PROFILES



ZACH HEMENWAY is Director of Music at Epiphany Parish in Seattle, where he leads a vibrant music program centered on the Anglican choral tradition and the rich heritage of sacred organ music. An active recitalist and improviser, his playing reflects a deep engagement with the historic improvisatory traditions of the organ and their continuing role in liturgy and concert performance.

Hemenway holds a Bachelor of Music in Organ Performance from the Eastman School of Music, where he studied organ with David Higgs and improvisation with William Porter, and a Master of Music in Organ Performance from Yale University, where he studied organ with Thomas Murray and improvisation with Jeffrey Brillhart.

In addition to his work as an organist and conductor, he is deeply committed to the pipe organ as a living instrument of worship and culture, and to cultivating musical life in the church through choral leadership, performance, and improvisation.



For the past 40 years, **SCOTT ATCHISON** has served as Director of Music and Organist at Peachtree Road United Methodist Church in Atlanta, Georgia, where he administers a program including nine choirs. Under his leadership, the choirs have performed in some of the most venerable cathedrals and halls around the world. In the United States, the Choir of Peachtree Road has appeared at Carnegie Hall, the National Cathedral in Washington D.C., and the Cathedral of St. John the Divine in New York City. The Peachtree Road Choir has toured internationally for many years. Notably, the choir has appeared at St. Paul's and Wells Cathedral in the United Kingdom and Notre Dame, Chartres, Reims Cathedral in France and Westminster Abbey, London, UK.

Mr. Atchison served as principal organist for the Atlanta Boy Choir for 18 years, accompanying them on many international tours. He currently serves on the artistic staff of the Georgia Boy Choir. In 2002, Mr. Atchison began the design and installation of the 106-stop Mander Organ in the church's new sanctuary. In November of that year, he was the featured soloist in the premiere of the Concerto for Organ, Orchestra and Chorus by renowned composer Stephen Paulus with the Atlanta Symphony Orchestra under the baton of Mr. Robert Spano.



OAK MARTIN is the Associate Organist-Choirmaster at Peachtree Road United Methodist Church in Atlanta, Georgia. Previous positions include Associate Organist at Saint Luke's Parish in Darien, CT; Organ Scholar at St. Thomas, Whitmarsh; St. Mark's, Philadelphia; and St. Bartholomew's, Atlanta. He is a graduate of the Interlochen Arts Academy where he studied organ with Thomas Bara and voice with John Bragle. Undergraduate studies were undertaken at the Curtis Institute of Music where he studied with Alan Morrison (organ), Leon Schelhase (harpichord), and Matthew Glandorf (improvisation). He received his M.Mus. from Yale University where he studied with Martin Jean (organ), Jeffery Brillhart (improvisation), and Richard Webster (liturgical music).

While at Yale, he was the student director of music for Berkeley Divinity School, the Episcopal seminary, at Yale where he oversaw music for services of Eucharist and the Daily Office, directed and accompanied the choir, and guided seminarians in liturgical music planning. Outside of organ performance, his graduate studies focused on the history of the Daily Office in the Anglican tradition, and the role of children in liturgy and music.



JOHN LEMLEY is the host and producer of *John Lemley's City Cafe*, a classical radio program on Georgia Public Broadcasting's GPB Classical. The show airs Tuesdays through Thursdays at 1:00pm ET on GPB Classical and Sunday nights at 9:00pm ET statewide on GPB Radio. Lemley is also co-anchor for *Crime Alert*, a daily newscast feature of *Crime Stories with Nancy Grace* on Sirius XM's Triumph Channel 111 weeknights at 9:00pm ET.

Beginning in 1997, Lemley hosted and produced a variety of news and arts programs for Atlanta's NPR affiliate, WABE. In 2015, Lemley moved his cultural program, *City Cafe* to WMLB-Atlanta, where the show was expanded and retooled to focus purely on classical music and arts interviews. Also in 2015, Lemley began serving as occasional news anchor for Atlanta radio stations WSTR (Star 94) and WYAY (News Radio 106.7).

Over the past two-and-a-half decades, Lemley has garnered numerous accolades and awards. He has been named "Best Drive-Time DJ" by the staff of the Atlanta Journal-Constitution for his work as host of the news magazine, *All Things Considered*. Atlanta Magazine chose Lemley and *City Café* as "Best of the Dial." He is also a recipient of a GLAAD media award and has been honored by the Georgia Association of Broadcasters for his work on *City Café*. Lemley graduated from Birmingham-Southern College in 1990 with a Bachelor of Arts degree in musical theatre. He also studied Latin at Emory University in Atlanta. Lemley is based in Atlanta, where he lives with his husband, Mike Selk.

PEACHTREE ROAD UNITED METHODIST CHURCH

The Music and Arts Program

presents

Passion of the Christ: The Musical Stations of the Cross

Sunday, March 22, 2026, 7:00 pm



1. JESUS IN THE GARDEN

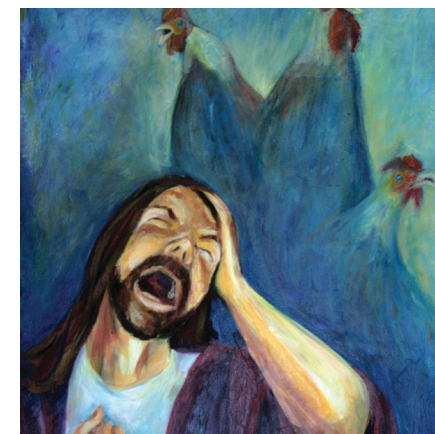
Reading: *Mark 14.32-36*

Schola: *Psalms 22 v. 1-8*

2. JESUS IS BETRAYED AND ARRESTED

Reading: *Mark 14.43-46*

Organ Improvisation



3. PETER DENIES JESUS

Reading: *Mark 14.72*

Organ Improvisation

4. JESUS IS JUDGED BY PILATE

Reading: *Mark 15.14-15*

Organ Improvisation





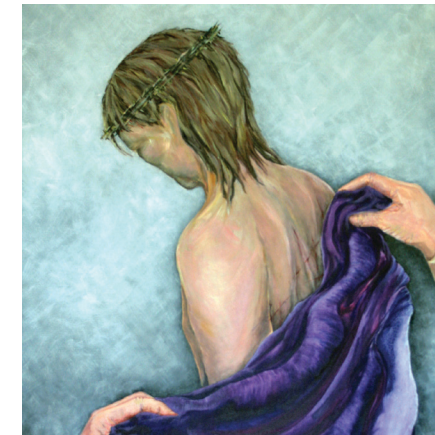
5. JESUS IS SCOURGED AND CROWNED WITH THORNS

Organ Improvisation

6. JESUS TAKES UP HIS CROSS

Schola: *Crux Fidelis*
attr. *John IV of Portugal*

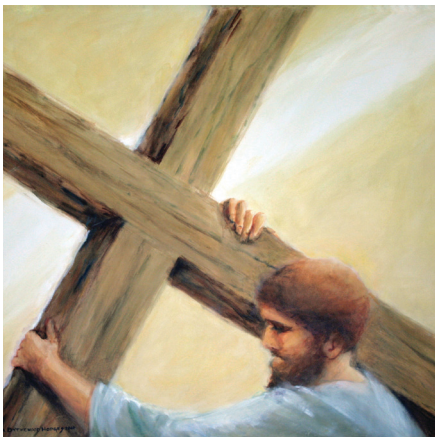
Faithful cross, above all other,
One and only noble tree:
None in foliage, none in blossom,
None in fruit thy peer may be.
Sweetest wood and sweetest iron,
Sweetest weight is hung on thee!



10. JESUS IS STRIPPED OF HIS CLOTHES

Reading: *Luke 23.34*
Schola: *O vos omnes*
Tomás Luis de Victoria (1548-1611)

O all ye that pass by the way, attend and see:
If there be any sorrow like to my sorrow.
Attend, all ye people, and see my sorrow:
If there be any sorrow like to my sorrow.



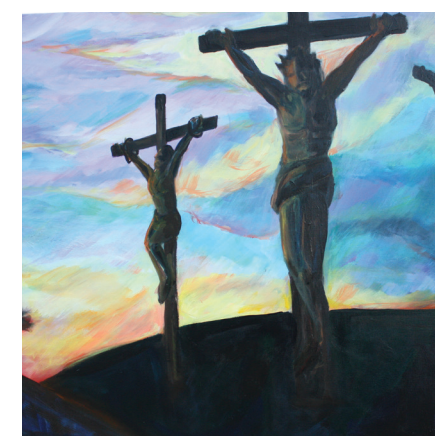
7. SIMON OF CYRENE FORCED TO HELP JESUS CARRY HIS CROSS

Reading: *Mark 15.21*
Organ Improvisation

8. JESUS MEETS THE WOMEN OF JERUSALEM

Reading: *Luke 23.27-31*
Schola: *Ubi Caritas*

Where charity and love are, God is there.
Christ's love has gathered us into one.
Let us rejoice and be pleased in Him.
Let us fear, and let us love the living God.
And may we love each other with a sincere heart.



12. JESUS PROMISES THE KINGDOM OF THE GOOD THIEF

Organ Improvisation

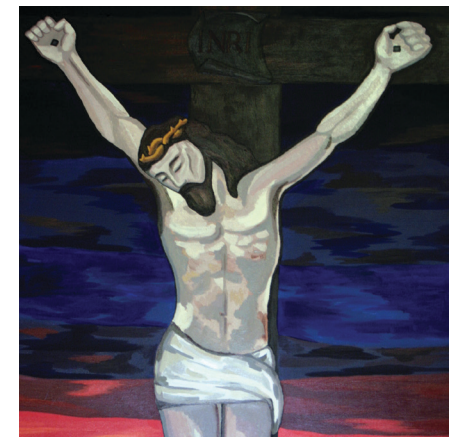
11. THE SOLDIERS CRUCIFY JESUS

Reading: *John 19.18*
Organ Improvisation



13. JESUS DIES

Organ Improvisation





14. JOSEPH OF ARIMATHEA TAKES JESUS DOWN FROM THE CROSS

Reading: *Luke 23.50-53*
Schola: *In manus tuas Domine*

Into your hands, O Lord, I commend my spirit.
You have redeemed me, O Lord, O God of truth.

15. JESUS BEING LAID IN THE TOMB

Reading: *Mark 15.46*
Organ Improvisation



LENT AND HOLY WEEK SERVICES

You are invited to join us at Peachtree Road for all of our Lenten and Holy Week Services.
For more information, visit www.prumc.org

Palm Sunday

March 29: 8:45 am Festival Worship, Sanctuary
10:00 am, Chapel Communion
11:15 am, Festival Worship, Sanctuary
Palm Procession and Festival Worship
Rev. Bill Britt, Preaching

We begin the most sacred week of the Christian year by commemorating Jesus' triumphant entrance into the Holy City of Jerusalem! Join us for festival worship with palms, procession, and special music from all out choirs.

Holy Week Midday Services

12:00 pm, Moore Chapel
March 30: Rev. Emily Miles
March 31: Rev. Geoff Beakley,
April 1: Rev. Josh Miles
April 2: Rev. Elizabeth Byrd,

Each day of Holy Week we offer midday moments of reflection and devotion led by our clergy and music staff.
Lunch will follow in Grace Hall.

Holy Thursday Choral Eucharist

April 2: 7:00 pm, Sanctuary

We commemorate the Last Supper of Jesus Christ when the sacrament of Holy Communion was established. The PRUMC Chancel Choir, Chamber Singers and chamber orchestra will offer music from Fauré, Lotti and Duruflé.
Rev. Josh Miles, preaching.

EASTER DAY

Easter: Christ is Risen
John 20: 1-18
Rev. Bill Britt

Easter Day Sunrise Service

6:30 am: Columbarium
+ Kindling of the New Fire
+ Lighting of the Paschal Candle
+ First Service of the Resurrection

You are invited to begin Easter with the historic tradition of the Great Vigil. Just as the first believers did, we will gather outside as dawn begins to break. As light fills the world, we will recognize Jesus' victory over death!
We will then process to the chapel for the first service of Easter.

Easter Day Festival Worship

8:15, 9:45, & 11:15 am: Sanctuary

Join us for a joyful celebration of Jesus' resurrection, and the hope of everlasting life! Festival worship will feature glorious music and an inspiring message. Rev. Bill Britt preaching. Music by The PRUMC Chancel Choir, Atlanta Brassworks, and the Peachtree Carillon. The events of Easter are the core of our faith and we invite you to rejoice with your church family!

CHAMBER SINGERS

Oak Martin, Conductor

SOPRANO

Lisa Beale
Chelsea Greene
Mary Allison Hamby
Holly Hanchey
Camden Pruitt

ALTO

Caroline Gilbert
Sierra Randall

TENOR

Mason Brannon
Raj Das
William Green

BASS

August Bair
Dan Beale
Michael Lindsay

THE GREAT ORGAN
MANDER ORGANS LONDON
106 STOPS, 135 RANKS

PEACHTREE ROAD UNITED METHODIST CHURCH
ATLANTA GEORGIA

CHANCEL EAST END DIVISIONS 2002

GREAT ORGAN (North case, mid-level, unenclosed)

Double Open			
Diapason	16	61 pipes	F
Open Diapason I	8	61 pipes	F
Open Diapason II	8	61 pipes	F
Stopped Diapason	8	61 pipes	
Harmonic Flute	8	61 pipes	
Cone Gamba	8	61 pipes	
Principal	4	61 pipes	
Octave	4	61 pipes	
Open Flute	4	61 pipes	
Twelfth	2 2/3	61 pipes	
Fifteenth	2	61 pipes	
Seventeenth	1 3/5	61 pipes	
Mounted			
Cornet III	2 2/3	111 pipes	
Furniture V	2	305 pipes	
Cymbal IV	2/3	244 pipes	
Trombone	16	61 pipes	
Trumpet	8	61 pipes	
Clarion	4	78 pipes	
Tremulant			

CHOIR ORGAN (North case, upper-level, enclosed)

Open Diapason	8	61 pipes	
Chimney Flute	8	61 pipes	
Viola Pomposa	8	61 pipes	
Viola Celeste	8	61 pipes	
Principal	4	61 pipes	
Koppel Flute	4	61 pipes	
Nazard	2 2/3	61 pipes	
Fifteenth	2	61 pipes	
Recorder	2	61 pipes	
Tierce	1 3/5	61 pipes	
Larigot	1 1/3	61 pipes	
Sharp Mixture IV	1	244 pipes	
Cor Anglais	16	61 pipes	
Cremona	8	61 pipes	
Tremulant			

SWELL ORGAN (North case, lower-level, enclosed)

Bourdon	16	61 pipes	
Open Diapason	8	61 pipes	
Gedackt	8	61 pipes	
Salicional	8	61 pipes	
Voix Celeste	8	61 pipes	
Flauto Dolce	8	61 pipes	
Unda Maris	8	61 pipes	
Principal	4	61 pipes	
Wald Flute	4	61 pipes	
Fifteenth	2	61 pipes	
Flageolet	2	61 pipes	
Sesquialtera III	2 2/3	183 pipes	
Plein Jeu V	1 1/3	305 pipes	
Contra Fagotto	16	61 pipes	
Harmonic Trumpet	8	66 pipes	
Hautbois	8	61 pipes	
Vox Humana	8	61 pipes	
Harmonic Clarion	4	78 pipes	
Tremulant			

PEDAL ORGAN (South case)

Double Open			
Diapason	32	12 pipes	
Subbass	32	12 pipes	
Open Diapason	16	32 pipes	F
Open Wood	16	32 pipes	
Bourdon	16	32 pipes	
Lieblich Bourdon	16	32 pipes	
Principal	8	32 pipes	F
Bass Flute	8	32 pipes	
Fifteenth	4	32 pipes	
Open Flute	4	32 pipes	
Mixture V	3 1/5	160 pipes	
Contra Bombarde	32	12 pipes	
Bombarde	16	12 pipes	
Bassoon	16	32 pipes	
Trumpet	8	32 pipes	
Clarion	4	32 pipes	
Schalmei	4	32 pipes	

SOLO ORGAN (South case, upper-level, unenclosed)

Bombarde	16	61 pipes
Bombarde	8	66 pipes
Clarion	4	78 pipes
Tuba	8	66 pipes
Chimes		21 tubes
Trompette Royale (West End Gallery)	8	61 pipes

COUPLERS

Swell to Great, Choir to Great,
 Solo to Great
 Swell to Choir, Solo to Choir
 Great to Pedal, Swell to Pedal,
 Choir to Pedal, Solo to Pedal
 Recit Shutters on Choir Pedal
 Great and Pedal Combinations Coupled

The organ is playable in its entirety from both consoles.

GALLERY WEST END DIVISIONS 2008

GRAND ORGUE

Bourdon	16	61 pipes	
Montre	8	61 pipes	F
Flûte à Cheminée	8	61 pipes	
Gamba	8	61 pipes	
Prestant	4	61 pipes	
Cor de Nuit	4	61 pipes	
Octavin	2	61 pipes	
Cornet III	8	111 pipes	
Furniture V	1 1/3	244 pipes	
Trompette	8	61 pipes	
Cromorne	8	61 pipes	
Clarion	4	61 pipes	
Tremulant			

PéDALE

Montre	16	32 pipes	F
Bourdon	16	32 pipes	
Quint	10 2/3	32 pipes	
Principal	8	32 pipes	
Flûte	8	32 pipes	
Octave	4	32 pipes	
Bombarde	16	32 pipes	
Trompette	8	32 pipes	
Chalmeau	4	32 pipes	

RÉCIT EXPRESSIF

Salicional	8	61 pipes
Céleste	8	49 pipes
Bourdon	8	61 pipes
Principal	4	61 pipes
Flûte à Fuseau	4	61 pipes
Nazard	2 2/3	61 pipes
Doublette	2	61 pipes
Quarte de Nazard	2	61 pipes
Tierce	1 3/5	61 pipes
Mixture IV	1 1/3	244 pipes
Basso	16	61 pipes
Trompette	8	61 pipes
Hautbois	8	61 pipes
Tremulant	8	61 pipes
Trompette Royale	8	61 pipes

COUPLERS

Récit to Grand Orgue
 Grand Orgue to Pédale
 Récit to Pédale

CHANCEL ORGAN CONTROL

Chancel General Pistons On